



Erne Boat Rally 2016

**THE 51st ANNUAL ERNE BOAT RALLY ON
UPPER & LOWER LOUGH ERNE
Friday 27th - Monday 30th May**



INTRODUCTION

Tanya Beattie Carson daughter of Colin and the late Audrey Beattie has been rallying since her early childhood days. She has fond memories of early Rallies with the highlight being the Kiddies Fancy Dress competition and Tug o War games played from each side of the river bank at Arney river. Tanya has never missed an Erne Boat Rally and when studying and working away from home she would have returned for her annual pilgrimage with a few friends on tow who never forgot the memories. In 1994 Colin & Audrey took over the Carrybridge Hotel and Tanya has ran the hotel since 1995 returning to her native Fermanagh to live and work. Now married to Nigel, with two teenagers Boyd & Tori, Tanya has her full crew for this years 51st Erne Boat Rally.



Tanya Beattie Carson: Commodore

Having lived in Co Fermanagh and enjoyed the lakes since early childhood Tanya was a keen watersports enthusiast did the Erne Boat Rally in an open boat at a very young age and even used to race speedboats. Tanya is looking forward to the next decade of boating on Lough Erne as she leads the 51st Erne Boat Rally this year.



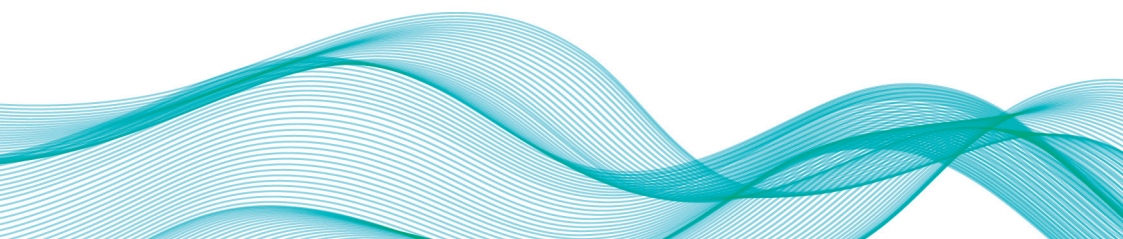
Matt Brady: Vice Commodore

Larger than life Matt from Killeshandra is the ideal Vice Commodore and will ensure that everyone has a safe passage. For many years he commanded the Colorado Queen, and more recently at the helm of Oakport. Go anywhere on the waterways, you will often be asked, 'Do you know big Matt?' The rallies, and any barbeque, just wouldn't be the same without him.



Irene Mitchell: Rear Commodore

Irene Mitchell lives outside Clogher Co Tyrone and she and husband Eric have been taking part in the Erne Boat Rally for about 20 years. Irene has won best lady boat handler twice therefore is well capable of her role this year. Both Irene and Eric have enjoyed boating for over 20 years and can be seen regularly cruising in Honky Tonk Woman. Irene who doesn't like to be late will be heading up the rear of this years rally and is looking forward to meeting up with old friends.



RALLY INSTRUCTIONS

1. All boats taking part in the Rally MUST fly the official 2016 Erne Rally Burgee.
2. No flags are to be flown during the Rally, with the exception of the Erne Flag and Bugees.
3. No boats will be allowed to sail with the Rally unless having secured an entry number. This rule will have to be fully enforced at insistence of Insurers.
4. The official number given to each boat must be prominently displayed. Your number is on the outside of your Rally Instructions and there is a spare copy in the envelope. Please put a number on each side of your boat.
5. The committee warns all entrants that anyone repeatedly causing excessive wash in the vicinity of moored boats, particularly at meal times, will be disqualified from the Rally.
6. The Inland Waterways Association of Ireland, it's Officials, The Rally Committee and all concerned with the conduct of the Rally, accept no responsibility in respect of accidents to, or caused by any Rally Entrants, his/her representative, passengers, crew or boat. Neither do they accept any responsibility for the correctness or otherwise of visual markers or buoy on the Waterways.

The Inland Waterways Association of Ireland (IWA), its Officials, The Erne Boat Rally Committee and all concerned with the conduct of the Rally, accept no responsibility in respect of accidents to, or caused by any Rally entrants, his/her representative, passengers, crew or boat; neither do they accept any responsibility for the correctness or otherwise of any visual marker or buoy on the waterway.

OFFICERS FOR 2016

Commodore: **Tanya Beattie Carson**

Vice-Commodore: **Matt Brady**

Chairperson: **Charlie McGettigan**

Treasurer: **Tanya Beattie Carson**

Secretary: **Damien Broomhead**

Safety Officer: **Paul Farrelly**

Rear-Commodore: **Irene Mitchell**

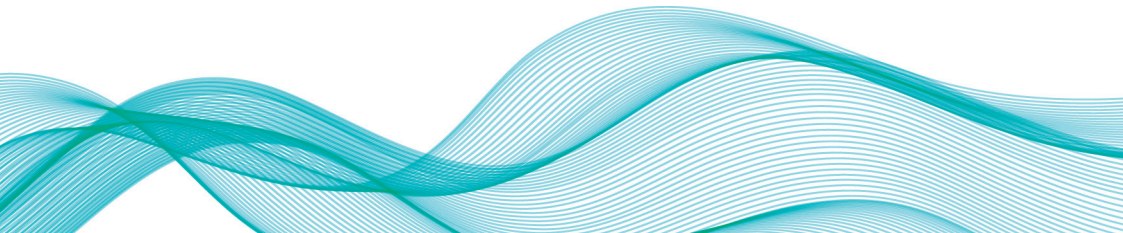
Vice Chairperson: **Archie Burrell**

Assistant Treasurer: **Colin Beattie**

Child Protection Officer: **Jane Bell**

2016 COMMITTEE

Sean McCaffrey, Matt Brady, Johnny Maguire, Cathal Kinney, Anne Nolan, Lorraine McGettigan, Maria Murphy, Ken Bell, Shirley Johnston, Don Mc Farlane & Irene Mitchell.



MAIN RALLY

FRIDAY 27th MAY

- 7.30pm Commodore's wine reception in the Seven Horse Shoes, Belturbet.
- 8.15pm Commodore Piped to her table.
- 8.30pm Commodore's Dinner Dance Commences.

SATURDAY 28th MAY

- 10.30am Commodore departs Belturbet for Lunch stop at the Round O.
- 3.00pm Commodore departs for Drumrush.
- 9.00pm Evening entertainment at Drumrush Lodge.

SUNDAY 29th MAY

- 10.45am Ecumenical Service.
- 12.00 noon Depart for the Commodores Wine & Cheese at Tully Bay Marina.
- 5.00pm Depart for Belleek. Entertainment in Black Cat Cove.

MONDAY 30th MAY

- 11.00am Commodore departs for an afternoon stop at the Ardhowen.
- 4.00pm Depart for Carrybridge, evening entertainment and prize giving.

VICE-COMMODORE WILL DEPART 30 MINUTES AFTER THE COMMODORE. REAR-COMMODORE WILL DEPART EACH STAGING POINT NO LATER THAN ONE HOUR AFTER THE COMMODORE.

MINI RALLY

FRIDAY 2nd SEPTEMBER

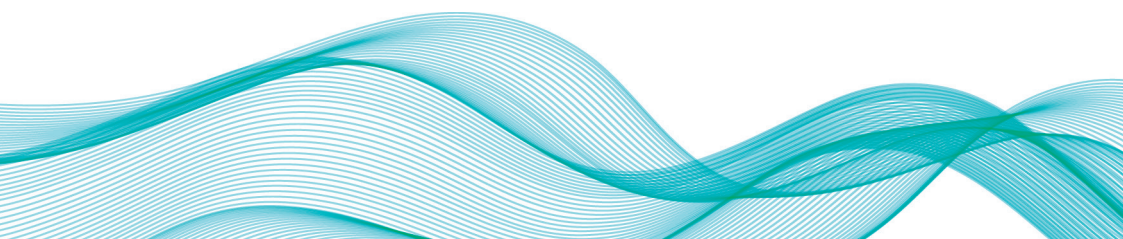
- 8.00pm Carrybridge Hotel Evening Entertainment

SATURDAY 3rd SEPTEMBER

- 12.30pm Depart for afternoon cruise and lunch stop at Knockninny
- 5.00pm Depart for Lisnaskea Boat Club and Evening Entertainment

SUNDAY 4th SEPTEMBER

- Depart for Afternoon Lunch Stop at Galloon
- 3.00pm Commodore Leaves for Overnight at Belturbet (Via Quivvy).

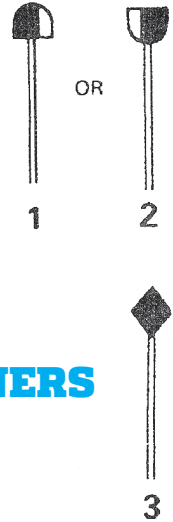


CUPS & TROPHIES

- **CLIFF PERPETUAL CUP**
Best Kept Cabin Cruiser, Equipment & Crew (Inboard Engine)
 - **BARHAM PERPETUAL CUP**
Best Kept Cabin Cruiser, Equipment & Crew (Outboard Engine)
 - **THORNTON PERPETUAL TROPHY**
Best Kept Open Boat, Equipment & Crew
 - **BROOMHEAD PERPETUAL CUP**
"Miss Erne Rally"
 - **JENNCOPHILL PERPETUAL CUP**
Boatmanship, open to all entrants
 - **EADIE PERPETUAL CUP**
Boatmanship, open to junior entrants
 - **SEAMASTER PERPETUAL CUP**
Best Kept Charter Boat & Crew entered in the Rally
 - **COOPER PERPETUAL TROPHY**
Best sailing Performance
 - **LEAHY PERPETUAL TROPHY**
Overall Entertainer
 - **FITZSIMONS TROPHY**
Ladies Boat Handling
 - **CARRYBRIDGE TROPHY**
Commodore's Trophy
 - **THE MOORINGS PERPETUAL CUP**
Presented at the Commodore's discretion
 - **THE LUSTY BEG PERPETUAL CUP**
Presented at the Commodore's discretion
- 

NOTES ON LAKE SIGNS

Navigation markers are painted red and white (1 and 2). Craft must pass the marker on the side painted white. Note - some markers are three dimensional. Middle ground markers (3) should be given a wide berth and can be passed on either side. Where two middle ground markers are together, do not go between them. Many markers bear a reference number which can be used to identify the location of your vessel on the waterway.



GOOD MANNERS MAKE GOOD MARINERS

- Slow right down when passing moored crafts, anglers and small boats
- When meeting craft head-on, pass on the right hand side
- Moor tidily and leave room for other boats
- Don't hog jetties. Help other boats to moor particularly when space is restricted
- Tie boats abreast if necessary
- Don't throw litter in the lakes - **THIS IS AN OFFENCE, AS WELL AS BEING OFFENSIVE!**

WATERWAYS IRELAND

The Waterways Ireland is one of six North-South Implementation Bodies established under the Good Friday Agreement in April 1998. Waterways Ireland has responsibility for the Shannon-Erne Waterway, the Shannon, the Erne, the Barrow Navigation, the Grand Canal, the Lower Bann and the Royal Canal.

The headquarters of the Waterways Ireland is in Enniskillen, County Fermanagh and the regional offices are located in Scarriff, County Clare; Carrick-on-Shannon, County Leitrim and Dublin.

Waterways Ireland

Headquarters: 2 Sligo Road, Enniskillen, Co Fermanagh, BT74 7SY

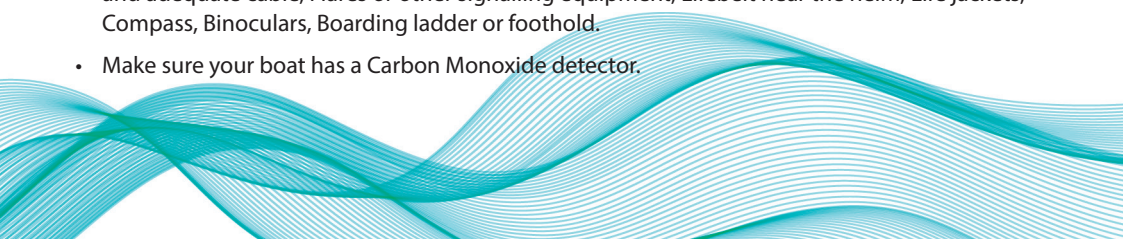
Telephone: +44 (0) 28 66 323 004

Fax: +44 (0) 28 66 346 257

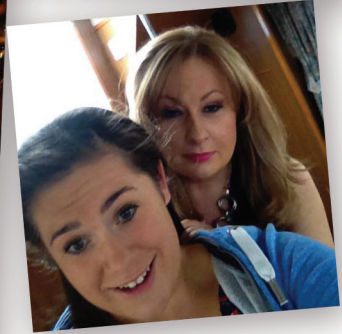
Email: info@waterwaysireland.org

Water Warden: David Wilson +44 (0) 28 66 322 836

SAFETY NOTES

- Watch your wash and reduce speed if necessary in confined waters and channels.
 - Slow down where boats are moored, when approaching quays or locks, or where other water activities are taking place. Always keep a sharp lookout for swimmers.
 - Learn basic Rules of Navigation but remember that you have an overriding responsibility to avoid collision.
 - Give a wide berth as possible to anglers and slow down, especially on canals when a competition is in progress. One boat rushing through can spoil the fishing for a large number of people for a long time.
 - Respect property (public and private) and areas where other events are in progress.
 - Never travel in exposed waters in bad weather without notifying someone responsible to your intentions. Try to travel in company.
 - Practice Man-Overboard drill and lifesaving procedures. It is useful to have another person aboard who knows how to control the boat.
 - **All craft must have appropriate lifejackets for everyone on board. They should be of correct size and be in good condition and been worn whenever conditions dictate including embarking and disembarking craft. For children this means virtually all the time even when on shore. Carry a couple of spare life – jackets for visitors and emergencies.**
 - Keep a fender ready for fending-off a quay or converging craft. Never allow anyone to fend off with a hand or a foot.
 - Never allow anyone to joyride in a dinghy when it is being towed.
 - Never allow fuel or oily bilge water to escape into the water. Take particular care when refuelling, especially outboard engines.
 - Be courteous: leave maximum space for other boats when mooring, and in locks; control your dinghy; if you have to tie up alongside another boat, ask permission, use adequate fenders and run your lines ashore where possible; do not rely on the other boat for security.
 - Do not tie up to navigational marks or anchor in a navigational channel.
 - Remember that it is contrary to the Lough Erne bye-laws to moor a boat at a public quay or harbour for more than 48 hours.
 - All boats should be covered by a suitable insurance policy (third party essential).
 - Make sure your boat is seaworthy.
 - Use the following checklist of equipment appropriate for your boat:
Fire extinguishers (correct type), First Aid kit, Adequate mooring lines & fenders, Anchors and adequate cable, Flares or other signalling equipment, Lifebelt near the helm, Life jackets, Compass, Binoculars, Boarding ladder or foothold.
 - Make sure your boat has a Carbon Monoxide detector.
- 





Erne Boats Ltd.

The Boat People



Isis 920i

Regal Distributor for Ireland
Manufacturers of Isis 920i and Isis 700 Luxury Cruisers
Skeeter 590c 2+2 Cruiser & Skeeter 590S Sportsboat
Rival 170 Sportsboat & Macliner 17 Sea Fishing Boat
Maho Range of Fishing Boats
and Dinghies from 11' - 18'



Rival 170 Outboard



Rival 170 Inboard



Skeeter 590c



Redfinn 6m



Macliner 17 Sea Fisher



Maho 16 Fast Fisher

Tel: 0286 7721555 Fax: 0286 7721150

Mobile: 07778 476644 / 07779 553534

Email: info@erneboats.com Web: www.isismotorboats.com

THE SEVEN HORSESHOES HOTEL

Great Food Selection
New Early Bird & A la Carte Menus Available
Lunches served daily from 12.30pm - 4.00pm
Early Bird & A la Carte from 4.00pm - 9.00pm
Function & Buffet Menus available on request
Taking bookings for weddings,
21st's, and all other functions



Belturbet, Co. Cavan.
Telephone: 049-952 2166
www.thesevenhorseshoes.com



DIXONS MARINA CARRYBRIDGE



- Walcon floating jetties
- Toilets/showers
- Storage/Slipway/Maintenance Shed
- CCTV
- Power/ Water/ Lights
- On site mechanic in association with CBC
- Telephone Jonny on 07706854286



B. McCAFFREY & SONS LTD

Supplying Construction and Lime Materials Throughout Ireland.

- Aggregates:** Crushed Stone, Building Sand, Plastering Sand
- Bitumous Materials:** Tarmac, Asphalt
- Concrete Products:** Ready Mix Concrete, Concrete Blocks, Prestressed Wall Panels, Concrete Feed Troughs, Cattle Slats, Passage Slabs
- Agricultural:** Screened Lime

Head Office (Derrylin) Rosshilly Derrylin Co. Fermanagh BT22 5UJ	Cam Quarry (Edmorey) Barnabrook Road Edmorey Co. Fermanagh 0044 (0)28 686 31466 BT22 5UJ	Dunmore Quarry Dunmore Drumquinn Co. Tyrone 0044 (0)28 828 31802
--	---	--

☎ 0044 (0)28 677 48434
www.mccaffreyquarries.com - info@mccaffreyquarries.com



The Widow's BAR

Main Street, Belturbet, Co. Cavan



All major credit cards, Euro, Sterling, US dollar and old Irish Punt accepted.

C. FLYNN ENGINEERING LTD.



Cathal Flynn 
Managing Director

Tel./Fax: 049 433 9088
Mobile: 087 254 8365
Email: info@marinasystems.ie

Moorings Available at



LOCHSIDE CRUISERS LTD

in the heart of Enniskillen, Co. Fermanagh

KEEN RATES

Contact Jim on 028 66 324 366
or 07843 967531

www.lochsidecruisers.com



McGurrens Butchers

The Diamond, Belturbet
Tel: 049-9522163



CARRYBRIDGE
LAKESIDE LODGE

Perfect Location for relaxation,
good food, hospitality, boating
& fishing

...on the shores of Lough Erne

Lisbellaw | Co. Fermanagh | BT94 5NF
Tel: 028 6638 7148 from NI | Tel: 048 6638 7148 from Rol

Lakeside Chalet Style
Accommodation
Gastro Pub Menu
Sunday Carvery
Weekend
Entertainment
Quality in a
relaxed
atmosphere

CARSONS **ECO WASH & VALETING**

FERMANAGH'S FIRST ENVIRONMENTALLY
FRIENDLY CAR WASH.

CARING FOR YOUR CAR, AND OUR ENVIRONMENT.

CARSONS CAR SALES
ENNISKILLEN

WWW.CARSONSCARSALES.COM

38 Tempo Road
Enniskillen
Co. Fermanagh
BT74 6HR
07973 670569
07843 441444

OPEN 7 DAYS
SUPPLYING QUALITY USED CARS

Black Cat Cove



Traditional Bar & Restaurant

Main St. Belleek, Co. Fermanagh
N. Ireland, BT933FX.

Tel: 028 68658942 Mob: 075 40418222 / 07540418223
Email: gormleys_@hotmail.co.uk



Dulrush Fishing Lodge

Belleek, Co. Fermanagh, N. Ireland. BT93 2AF

ACCOMODATION

on the Banks of The River Erne with Private Jetty

Tel: 028 68658066 Mob: 075 40418222 / 07540418223
Email: gormleys_@hotmail.co.uk
www.dulrushfishinglodge.com

Erne School Of Motoring
www.ErneSchoolOfMotoring.com

- Complete Beginner (EDT), Trailers & Driving Test Tuition
- Very Competitive Rates
- Student Rates & Offers
- Pick Up/Drop Off Service
- Gift Vouchers Available
- Essential Driver Training (EDT)

CONTACT
Erne School of Motoring
Deanery Banks, Belturbet,
Phone: (049) 95 22314
Mobile: 087 2691857
info@erneschoolofmotoring.com



M.T. McGuinness MPS
DISPENSING CHEMIST
MAIN STREET
BELLEEK
028 68658218

Web Design & Development
Tinterweb Design - We build websites.

Responsive Web
- one website, all devices

So your website works...

- tablets (iPads...)
- smartphones (Phones...)
- laptops
- desktop computers

Call today for a free no obligation website mockup & quote of what we can do for you & your business.

www.TinterWebSiteDesign.com | 0876383195

• Web design and development
• Blog, CMS, eCommerce & web application development
• Domain registration, management and hosting
• Search Engine Optimisation
• Email marketing and landing page optimisation
• Keyword research and PPC campaign management
• Discrete and confidential web development

TANNYOKY
GUNS | AMMO Ltd

Shotguns
Ammunition
Clay Targets
Re-Loading

Supplies at Keenest Prices

19, Ballyreagh Road, Poyntzpass BT35 6RQ
Telephone: (028) 38 318 308 Fax: 028 38 318 325
Mobile: 07801 478010, 07876 416 974

www.tannyokyguns.com
E: c.mcclure90@btinternet.com
Registered Firearms Dealer 285

